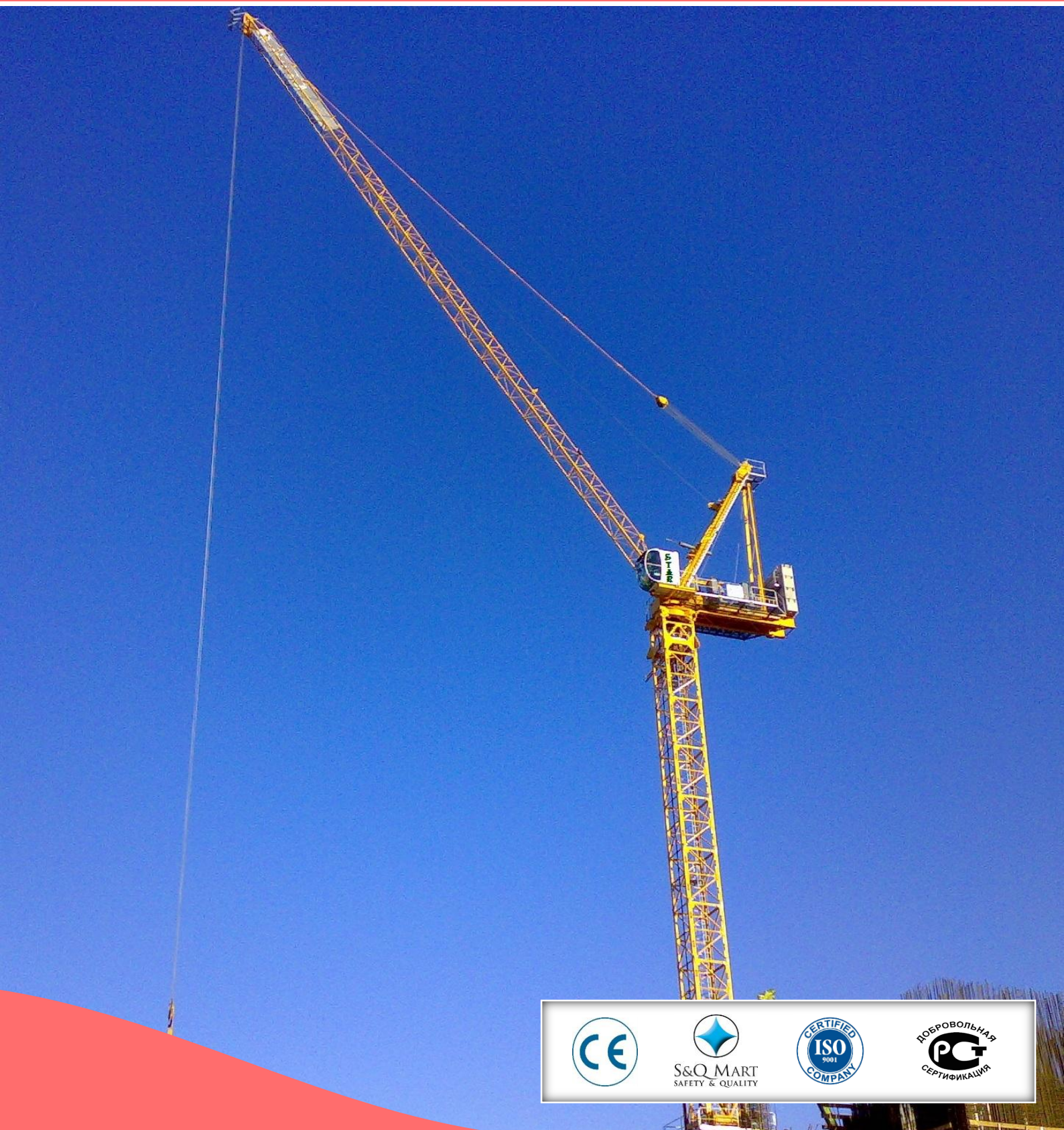


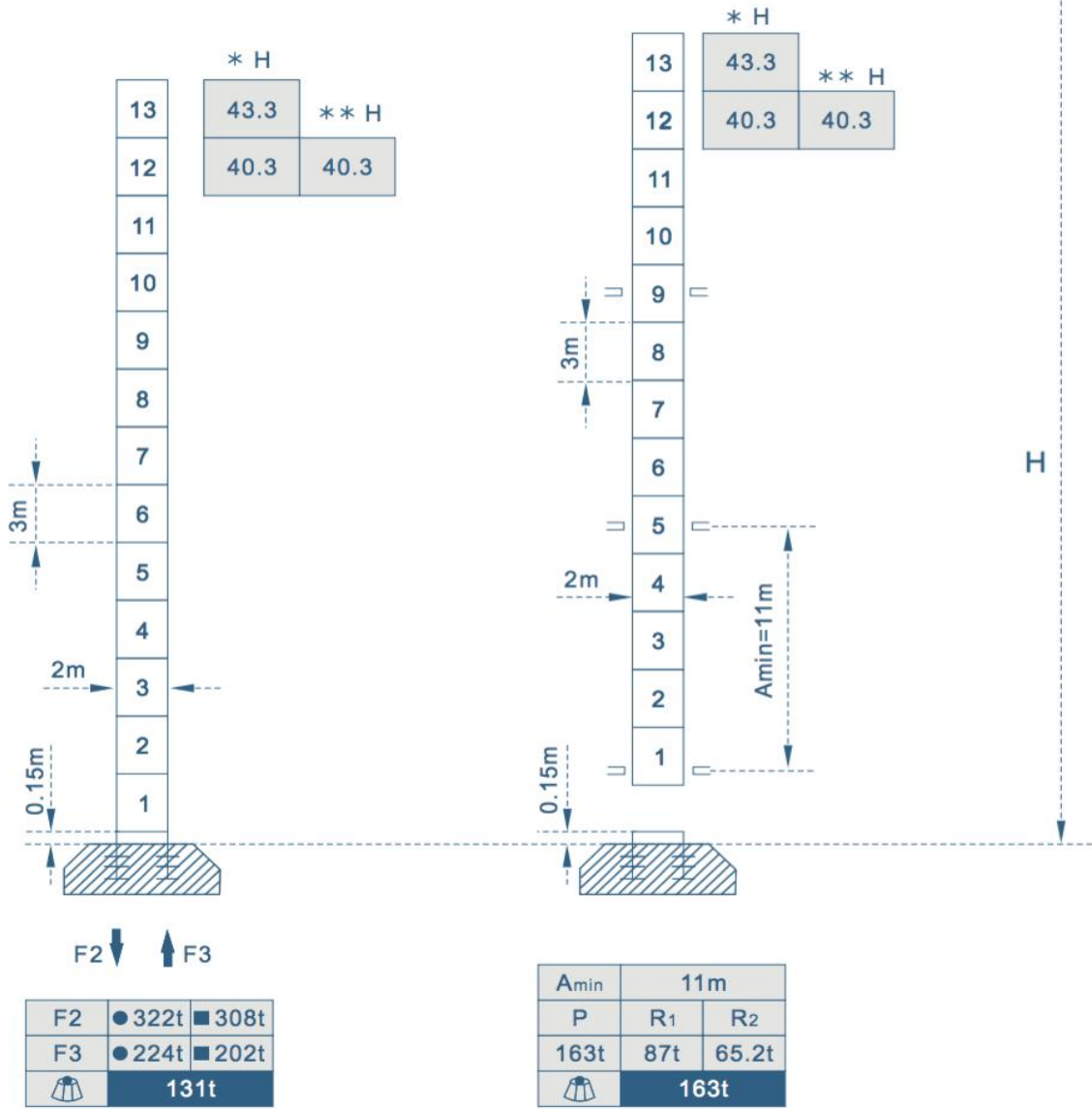


# SLG 5525-20

*Experts in the field*



Mast  $\varnothing$  2m x 2m



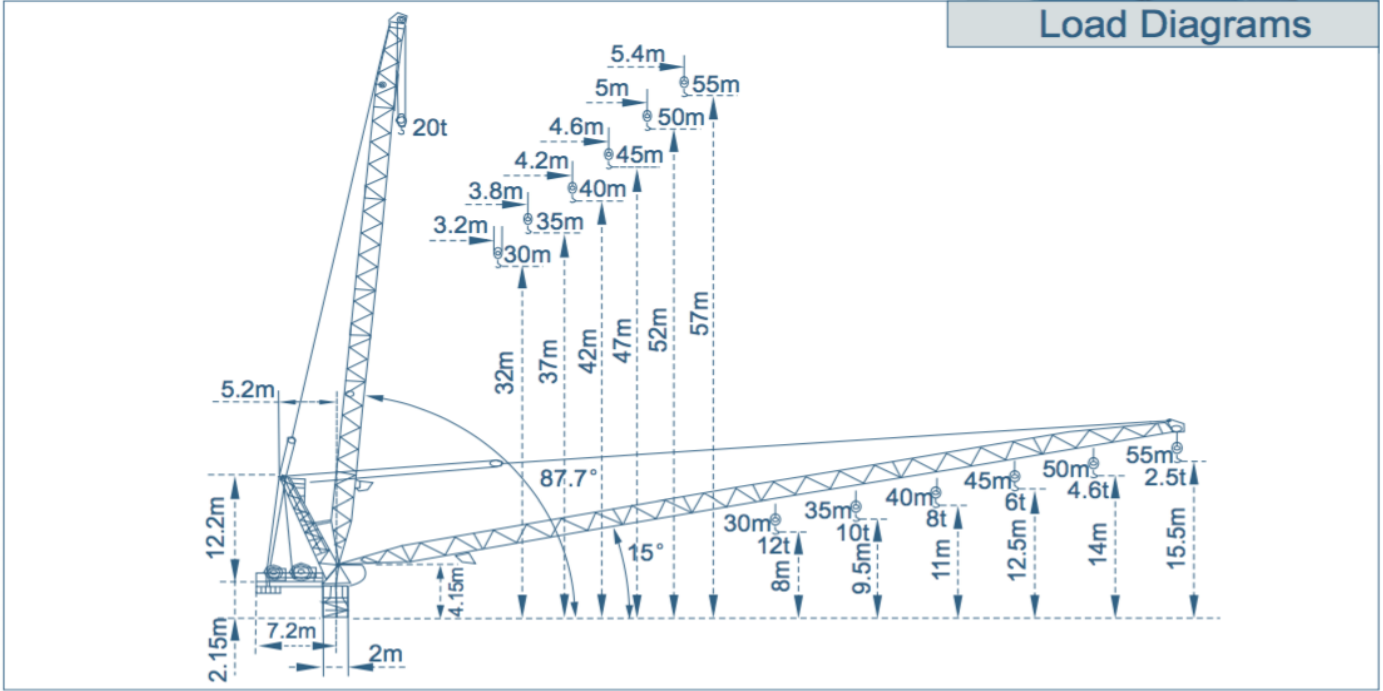
F= Reactions

H (m)

JIB \* 30-40m \*\* 45-55m

- In service
- Out of service





🏗️ Without load and ballast with longest jib and maximum height



**Load diagrams**

**Jib**

<b>55m</b> ⊠	5.4-14.5	16	18	20	22	25	27	30	32	35	37	40	42	45	47	50	52	55	m	
	20	18	16.1	14.1	12.6	10.9	9.7	8.5	7.5	6.5	5.7	5	4.5	3.9	3.4	2.9	2.5	2.2	t	
	5.4 →							27	30	32	35	37	40	42	45	47	50	52	55	m
								10	8.8	7.8	6.8	6	5.3	4.8	4.2	3.7	3.2	2.8	2.5	t
<b>50m</b> ⊠	5 →		18	20	22	25	27	30	32	35	37	40	42	45	47	50				m
			20	17.6	15.6	13.7	12.3	10.8	9.8	8.5	7.7	6.7	6	5.2	4.7	4.3				t
	5 →									32.7	35	37	40	42	45	47	50			m
										10	8.8	8	7	6.3	5.5	5	4.6			t
<b>45m</b> ⊠	4.6 →		18.3	20	22	25	27	30	32	35	37	40	42	45						m
			20	18	16	14	12.6	11.1	10.1	8.9	7.9	6.9	6.3	5.7						t
	4.6 →									32.2	35	37	40	42	45					m
										12	10	9.2	8.2	7.2	6.6	6				t
<b>40m</b> ⊠	4.2 →		19.2	20	22	25	27	30	32	35	37	40								m
			20	19.1	17	14.8	13.5	11.8	10.8	9.5	8.6	7.7								t
	4.2 →									34.3	37	40								m
										10	9	8								t
<b>35m</b> ⊠	3.8 →		19.4	20	22	25	27	30	32	35										m
			20	19.3	17.2	15	13.6	11.9	10.9	9.6										t
	3.8 →									35										m
										10										t
<b>30m</b> ⊠	3.3 →		19.6	20	22	25	27	30												m
			20	19.5	17.3	15	13.6	12												t
	3.3 →							30												m
								10												t

Specifications Mechanisms						
Mechanisms	Motor type	Speeds m/min		Capacity t.	Rope lenght	Motor kW
Hoisting	150LVF100 	1 fall	0-50	10	580m >580m ★	110
			0-80	5		
			0-100	2.5		
		2 fall	0-25	20		
			0-40	10		
			0-50	5		
Luffing	150LVF70 	≤1.8min				110
	120LVF70 	≤3min				90
Slewing	RCV185 	0-0.7r/min				3×185N.m

★ To be supplied according to client's specific requirements

This commercial documents is not legally bindig.  
For any technical information, please refer to  
the corresponding instructions.

